

April 2013



## NACHI: Progress and innovation leadership

Since its foundation in 1967, NACHI Europe GmbH has stood for high-quality products and first-class service. During its 40 years of existence, the company has decisively shaped the industry, in particular the European small and medium-sized business sector, with its ambitious and sophisticated innovations. NACHI CEO Shigeru Kobayashi: "Our customers appreciate our reputation for continuous technological development, maximum quality and precision, as well as the absolute reliability we offer our business partners. In the future, we intend to continue providing our customers with even better,



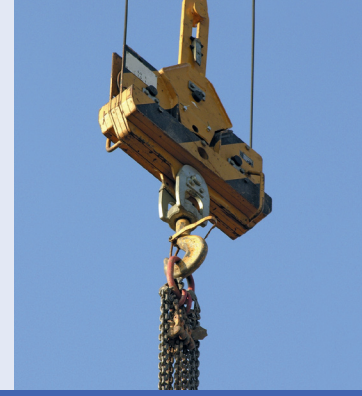
even more precise, and even stronger products and product systems." Ball bearings and rolling bearings from NACHI are appreciated the world over as premium-quality Japanese

components. NACHI has achieved this high standard by implementing car industry-style quality assurance management,

which the company has also adopted for its products designed for industrial applications. During the extensive measurement and testing procedures that follow every production process, the chemical and physical properties of every product are precisely checked and approved for further production. Andreas Massek, Sales Manager at NACHI Europe: "Thanks to our quality assurance management, we are able to deliver products of consistently high quality – that sets us apart from the low-price suppliers from the emerging markets; it guarantees the customer maximum process security for his applications."



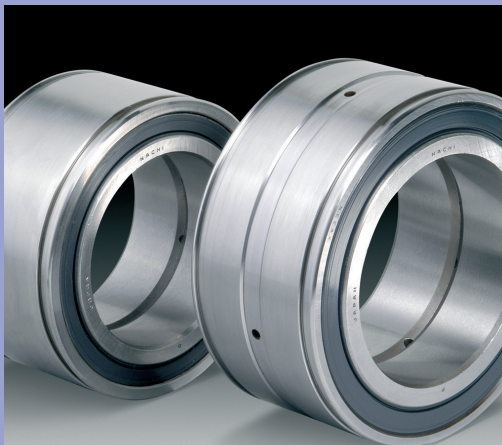
# NACHI product portfolio



## NACHI spherical roller bearings:

Also in a special version for vibrating screens

Spherical roller bearings are a product of strategic importance for NACHI. Consequently, it is an area in which the company is particularly focusing its efforts on product quality, R&D spending and intensive marketing. The special metallurgical design of the EX-V spherical roller bearing means that its impact strength is ten times higher than that of standard bearings. It also generates far less heat. These properties make EX-V bearings especially suitable for use in vibrating screens and shredding machines. A hallmark of all NACHI spherical roller bearings is the premium quality for which Japan is known in the marketplace. This is also reflected in exceptional heat stability (up to 200 degrees Celsius) and in high load ratings, leading to a lifespan of above-average length.



## Full-complement cylindrical roller bearings from NACHI:

Usage in cranes and at container terminals

Practically all truck crane, ship crane and container terminal manufacturers know that their money is well invested in tried-and-trusted quality products from NACHI. The company's E50 series full-complement cylindrical roller bearings, which are used in the bearing arrangements in rope pulleys in cranes, are known for their excellent dynamic and static capacities. In addition to its full complement of rollers, the basic construction also features double-sided seals. Rubber contact seals prevent the penetration of dust and water and thus significantly increase the component's service life.



## Deep groove ball bearings from NACHI: Greater performance and reliability

NACHI's Quest brand deep groove ball bearings fulfil even the highest demands for material quality and tool life. They are engineered for a new generation of industrial machinery that works at high rotational speeds and at high temperatures. Quest is a brand that guarantees high quality and maximum robustness, meaning that the bearings function perfectly across a broad bandwidth of operating conditions. Heat-resistant rubber seals prevent the infiltration of dust and increase the permissible temperature limit by around 10%. The high-performance lubricant ensures a low start-up torque.





## NACHI precision bearings:

Building blocks for speed, stability and quality

Precision bearings from NACHI are renowned worldwide as high-technology components. That's why companies that rely on low-maintenance and absolutely reliable 'total quality processes' in their industrial production know that they can trust NACHI's renowned precision bearings. Industrial automation, robot technology, mechanical engineering, machine tools, printing machines and other applications are areas where series 70, 72 and 79 single-row angular contact ball bearings, series NN30 double-row cylindrical roller bearings and also TAB series double-row angular contact ball bearings are particularly popular.

---

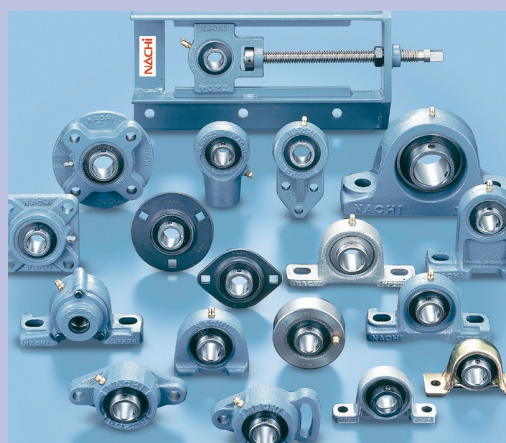


## NACHI cylindrical roller bearings:

High quality at maximum load capacity

Compact NACHI cylindrical roller bearings can cope with extreme loads at medium rotational speeds. This enables frictionless operation for bearings that are used, for instance, in electric motors, industrial drive units and other technical mechanical engineering applications. From raw material procurement via incoming goods checking to the finished product and its delivery to the customer, NACHI cylindrical roller bearings are subject to a fully traceable and almost entirely automated process chain which thoroughly lives up to the market's high quality standards.

---



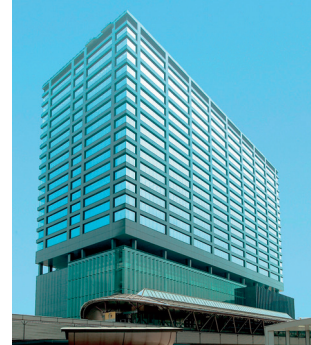
## Bearing units from NACHI:

Precise, robust, high-quality

The great benefit of bearing units is their ease of assembly. They consist simply of a set of bearings and a housing, whereby individual bearing types can be combined with different casing types. Bearing units are utilised especially for plant engineering, conveyor technology and mechanical engineering. In this area in particular, precision and material quality are of prime importance. NACHI offers a broad portfolio of bearings for low to heavy loads. These bearing units consist of a casing and a deep groove ball bearing with double-sided packing disks and a convex external ring.

---

# NACHI: A globally active company from Japan



NACHI-Fujikoshi is a Japanese company with a worldwide network of production sites, companies and subsidiaries which serve continental and national markets.

Its active research and development programme as well as its adoption and use of technological advancements have helped NACHI to

consistently build on its quality advantage. NACHI supplies its European customers exclusively with products of Japanese quality from its factories in Japan and Europe.



NACHI Europe GmbH based in Krefeld.

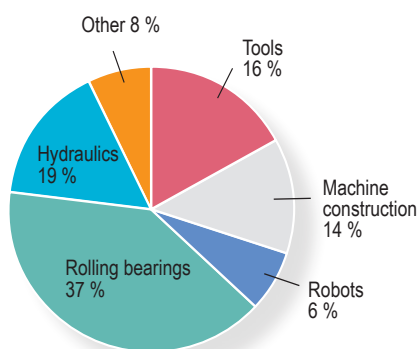


## Annual Report 2012

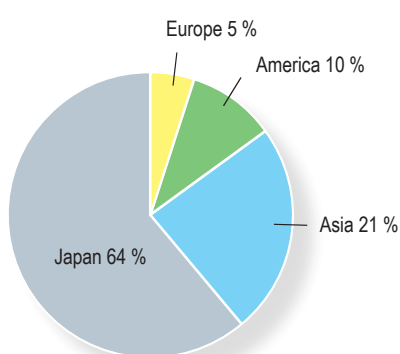
### President Hiroo Honma: Success for NACHI

The Annual Report endorses NACHI-Fujikoshi's corporate strategy of maintaining and strengthening its market position through new products, strong quality awareness and a commitment to reducing costs. At a press conference in Tokyo, Honma reaffirmed the company's intention to collaborate with its partners all around the world to achieve its business objectives and further strengthen NACHI's excellent reputation.

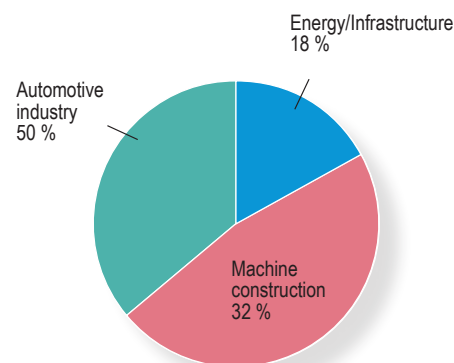
**Total turnover 2012:**  
**€ 1,497 bn (115 Yen / Euro)**



**Turnover by region**



**Turnover by market**



Imprint:  
NACHI EUROPE GmbH, Managing Director: Shigeru Kobayashi  
Bischofstraße 99, 47809 Krefeld  
Telephone: 0049 (0)2151 65046-0, Fax: 0049 (0)2151 65046-90  
www.nachi.de, nachi@nachi.de  
Editorial: Sönke Willms-Heyng, www.pr-mann.de  
Graphics: Maria Lentzen, www.lentzen-grafik.de  
Photos: NACHI, Fotolia

# NACHI

Please contact your NACHI distributor.