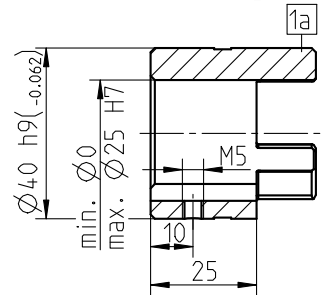


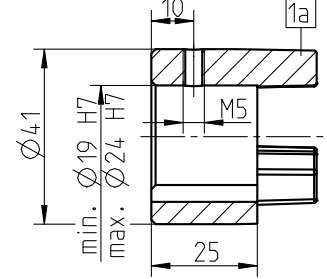
Paßfedernute nach DIN 6885 Bl. 1-JS9  
keyway acc. to DIN 6885 sheet 1-JS9

Große Nabe / large hub



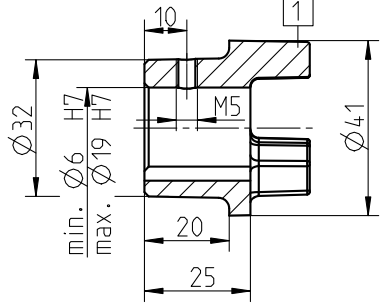
Nabenwerkstoff: 11SMn30C  
hub material: 11SMn30C

Große Nabe / large hub

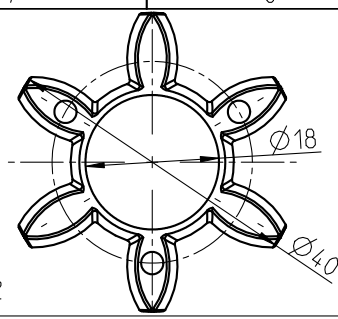


Nabenwerkstoff: GD-ALSi12(Cu)  
hub material: GD-ALSi12(Cu)

Standard / standard



Nabenwerkstoff: GD-ALSi12(Cu)  
hub material: GD-ALSi12(Cu)



Zahnkranz/ spider  
92 Sh A T-PUR orange / orange  
(92 Sh A PUR gelb / yellow)  
Drehmoment/ Torque  
 $T_{KN} = 10Nm$   
 $T_{Kmax} = 20Nm$

Zahnkranz/ spider  
98 Sh A T-PUR lila / purple  
(98 Sh A PUR rot / red)  
Drehmoment/ Torque  
 $T_{KN} = 17Nm$   
 $T_{Kmax} = 34Nm$

In Kombination mit Aluminium-Nabe,  
Ruecksprache mit KTR /  
in kombination with Aluminium-hub,  
please consult KTR

Zahnkranz/ spider  
64 Sh D T-PUR grün / green  
64 Sh D PUR natur-weiß mit  
gruener Zahnmarkierung /  
natural white with  
green tooth marking  
Drehmoment/ Torque  
 $T_{KN} = 21Nm$   
 $T_{Kmax} = 42Nm$

Vor Einsatz Ruecksprache KTR/  
before inserting please consult KTR


Massentraegheitsmoment ( $J_{ges}$ ) der Kupplung (mit max. Bohrung)/  
mass moment of inertia ( $J_{ges}$ ) of the kupplung (with max. bore)

Oberflaechenguete nach DIN ISO 1302 Reihe 2  
Surface quality acc. to DIN ISO 1302 line 2  
Allgemeintoleranzen nach DIN ISO 2768 - mH  
General tolerances acc. to DIN ISO 2768 - mH

Schutzvermerk ISO 16016 beachten  
Note protection mark acc. to ISO 16016  
Masstab Scale 1:1  
Format DIN Size A3

	Flansch / flange	Große Nabe / large hub	Standard / standard	Große Nabe / large hub
Werkstoff / material	EN-GJS-400-15	11SMn30C	GD-ALSi12(Cu)	GD-ALSi12(Cu)
$J_{ges}$	0.00010117 kgm <sup>2</sup>	0.00014977 kgm <sup>2</sup>	0.00011384 kgm <sup>2</sup>	0.0001213 kgm <sup>2</sup>

<b>ROTEX 19</b> CF			
gezeichnet drawn	Werkstoff Material	Teilnummer Part number	Kz
Datum 13.01.12	DIN		
Name SCHP	Gewicht Weight	0.479	

 KTR-Kupplungstechnik GmbH D-48407 Rheine			
Teilnummer Part number	Kz	Lfd.-Nr. Current number	Index Change
	M	426464	2