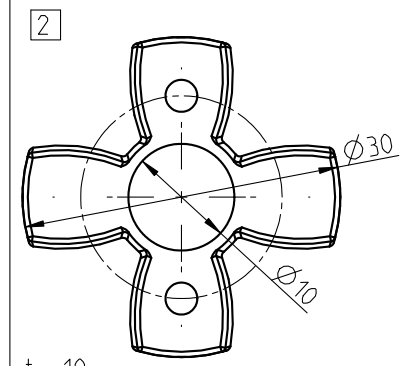
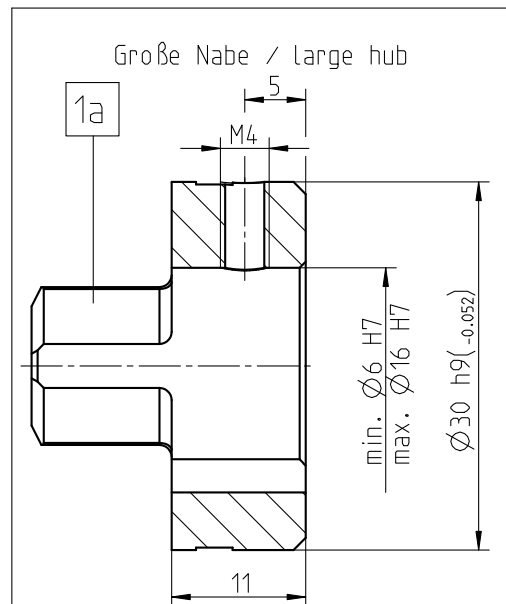


Nabenwerkstoff: EN AW-6023 T6 (AlMgSi1)
 hub material: EN AW-6023 T6 (AlMgSi1)

Paßfedernute nach DIN 6885 Bl. 1-JS9
 keyway acc. to DIN 6885 sheet 1-JS9



Zahnkranz/ spider:
 92 Sh A T-PUR orange/ orange
 (92 Sh A PUR gelb/ yellow)
 Drehmoment/ Torque
 $T_{KN} = 7.5Nm$
 $T_{Kmax} = 15Nm$

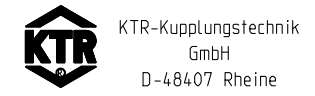


Zahnkranz/ spider:
 98 Sh A T-PUR lila / purple
 (98 Sh A PUR rot/ red)
 Drehmoment/ Torque
 $T_{KN} = 12.5Nm$
 $T_{Kmax} = 25Nm$

In Kombination mit Aluminium-Nabe,
 Rücksprache mit KTR /
 in combination with Aluminium-hub,
 please consult KTR

Oberflächengüte nach DIN ISO 1302 Reihe 2
 Surface quality acc. to DIN ISO 1302 line 2
 Schutzvermerk ISO 16016 beachten
 Note protection mark acc. to ISO 16016
 Allgmeintoleranzen nach DIN ISO 2768 - mH
 General tolerances acc. to DIN ISO 2768 - mH
 Masstab Scale 4:1
 Format DIN Size A3

**ROTEX 14
 Standard**



	gezeichnet drawn	Werkstoff Material		Teilnummer Part number	Kz	Lfd.-Nr. Current number	Index Change
Datum	02.12.11	DIN			M	448333	2
Name	SCHP	Gewicht Weight	0.042				