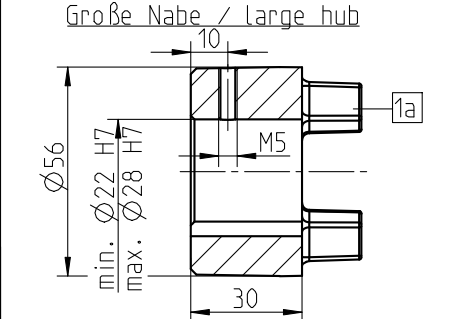
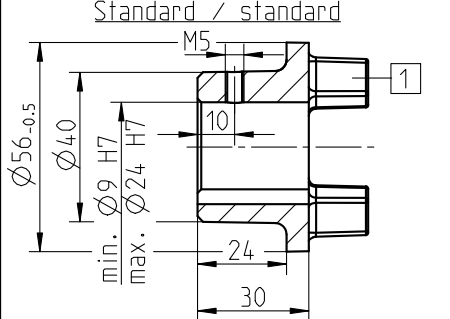


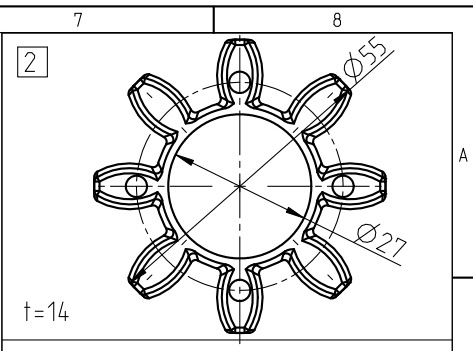
Große Nabe / large hub
Nabenwerkstoff: 11SMn30C
hub material: 11SMn30C



Große Nabe / large hub
Nabenwerkstoff: GD-ALSi12(Cu)
hub material: GD-ALSi12(Cu)



Standard / standard
Nabenwerkstoff: GD-ALSi12(Cu)
hub material: GD-ALSi12(Cu)



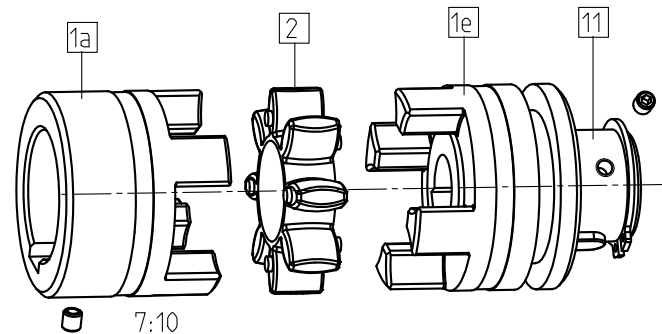
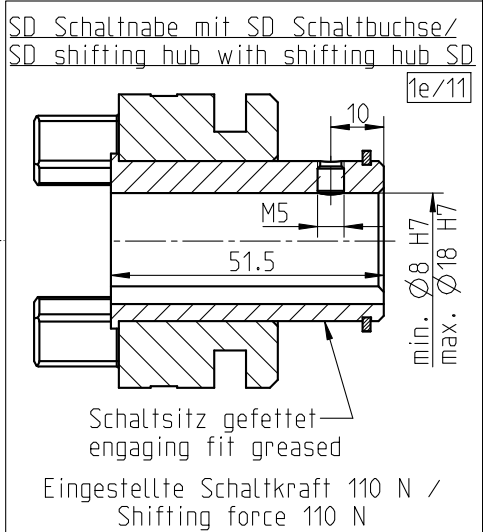
Zahnkranz/ spider
92 Sh A T-PUR orange / orange
(92 Sh A PUR gelb / yellow)
Drehmoment/ Torque
 $T_{KN} = 35Nm$
 $T_{Kmax} = 70Nm$

Zahnkranz/ spider
98 Sh A T-PUR lila / purple
(98 Sh A PUR rot / red)
Drehmoment/ Torque
 $T_{KN} = 60Nm$
 $T_{Kmax} = 120Nm$
In Kombination mit Aluminium-Nabe,
Ruecksprache mit KTR /
in kombination with Aluminium-hub,
please consult KTR

Zahnkranz/ spider
64 Sh D T-PUR grün / green
64 Sh D PUR natur-weiß mit
gruener Zahnmarkierung /
natural white with
green tooth marking
Drehmoment/ Torque
 $T_{KN} = 75Nm$
 $T_{Kmax} = 150Nm$
Vor Einsatz Ruecksprache KTR/
before inserting please consult KTR

Oberflächengüte nach DIN ISO 1302 Reihe 2
Surface quality acc. to DIN ISO 1302 line 2
Schutzvermerk ISO 16016 beachten
Note protection mark acc. to ISO 16016
Allgemeintoleranzen nach DIN ISO 2768 - mH
General tolerances acc. to DIN ISO 2768 - mH
Masstab Scale 5:4
Format DIN Size A3

ROTEX 24 SD				KTR-Kupplungstechnik GmbH D-48407 Rheine			
gezeichnet drawn	Werkstoff Material	Teilnummer Part number	Kz	Lfd.-Nr. Current number	Index Change		
Datum 15.02.12	DIN		M	450276	1		
Name SCHP	Gewicht Weight	1.211					



Paßfedernute nach DIN 6885 BL 1-JS9
keyway acc. to DIN 6885 sheet 1-JS9

Massenträgheitsmoment (J_{ges}) der Kupplung (mit max. Bohrung)/
mass moment of inertia (J_{ges}) of the kupplung (with max. bore)

	SD-Schaltnabe / SD shifting hub	Große Nabe / large hub	Standard / standard	Große Nabe / large hub
Werkstoff / material	11SMn30C (Nabe / hub) S355J263 (Buchse / bush)	11SMn30C	GD-ALSi12(Cu)	GD-ALSi12(Cu)
J_{ges}	0.00021517 kgm ²	0.00041816 kgm ²	0.00026055 kgm ²	0.00030135 kgm ²